

ITS-VEL 1510B

Description

Stroke: 3,00 mm
Weight: 24 g

Coil Data

Duty (%)	100	50	25	10
Power Drain (Watt)	1,7	3,4	6,8	17
Max. Duty (Seconds)	∞	150	75	30

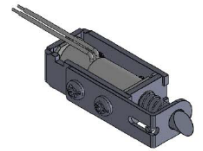
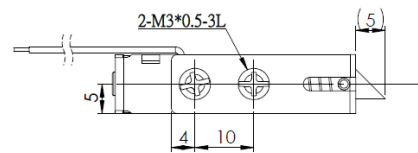
Solenoid Layout

Voltage:
 6 VDC (standard)
 12 VDC (standard)
 24 VDC (standard)
 other voltages on request

Special development

Sie wollen diesen Standardmagneten abändern (z. B. Abmessungen, Kräfte, usw ...) dann senden Sie uns einfach dieses Formular: [Checkliste \(PDF, 390 kB\)](#)

Non energized



Energized

